



# The Basin Triangle Masterplan. Materials for Community Consultation.

Prepared for: Knox City Council

Date issued: 25/05/2021

Prepared by:

**Outerspace Landscape  
Architects Pty Ltd**

Studio 8/4 Nicholas Building

37 Swanston St

Melbourne VIC 3000

in collaboration with:

**PlaceScore**

collaboration | engagement | placemaking

16 Jackson St

Northcote 3070

**OUTER  
SPACE**

 **PLACESCORE**

---

Page 2 Consultation and Opportunities

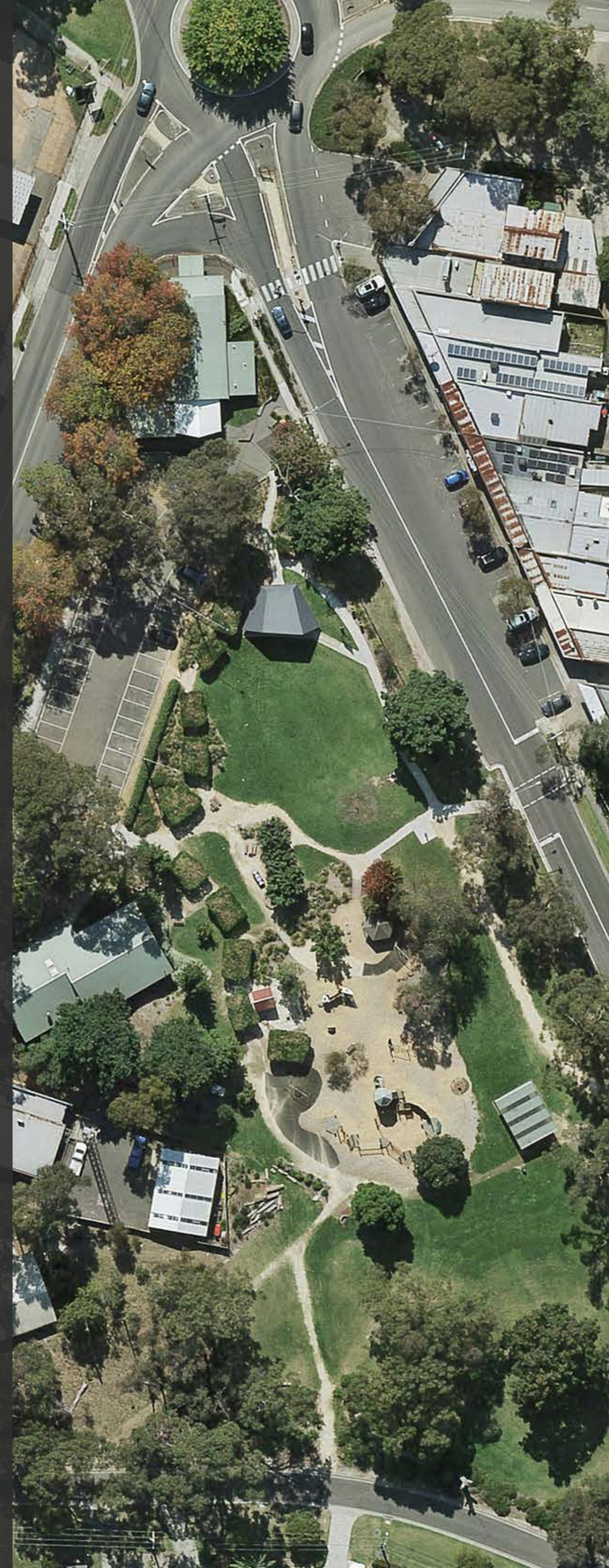
---

Page 3-4 Our Vision for The Basin Triangle

---

Page 5-8 The DRAFT Master Plan

---





## Things people love.

Elements of the natural environment like trees, views, native grass, and Wisteria plants

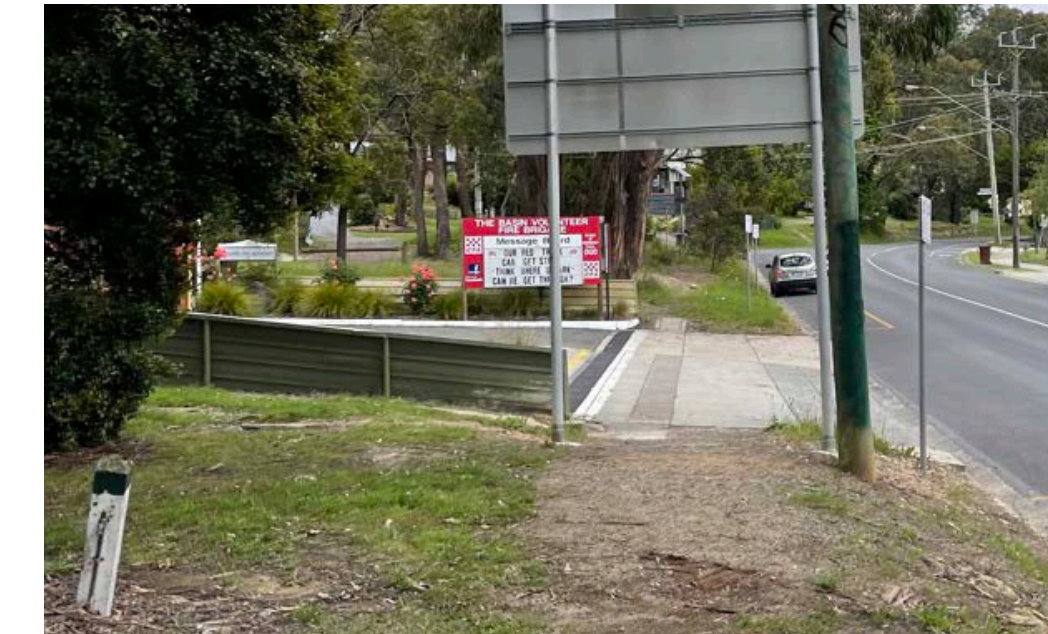


The need for more seating and sheltered spaces

Large open space and play areas



## Room for Improvement.



Improve pedestrian access and safety

Encouraging more groups to use the park, and the opportunity to host additional events

Retention of the current experience of the park



## Opportunities.

Emphasising the history of the park, and its connection to the past



Connectivity and accessibility of the amenities within the park, and to the adjacent cafes and shops



## Our Vision for The Basin Triangle.

↓  
Artwork and  
heritage  
interpretation



↑  
Strengthen the  
Basin Triangle  
connections to  
the mountains



→  
The Basin Triangle  
is a place for  
gathering and  
picnicking



→  
Provide for visitors



←  
The Basin Triangle is popular with  
a variety of community events



↑  
Deciduous trees  
provide beautiful  
autumnal colour



## Our Vision for The Basin Triangle.



### Be a destination.

- Support local businesses.
- Provide amenity for a variety of community events.



### Connected to the natural setting.

- Protect existing views and vegetation.
- Enhance the visual, natural and cultural values of the foothill landscape.



### Enjoyment for all.

- Rejuvenate existing play space.
- Improve connections from the play space to other areas of the Triangle.
- Employ Safer By Design principles.



### Provide for the community.

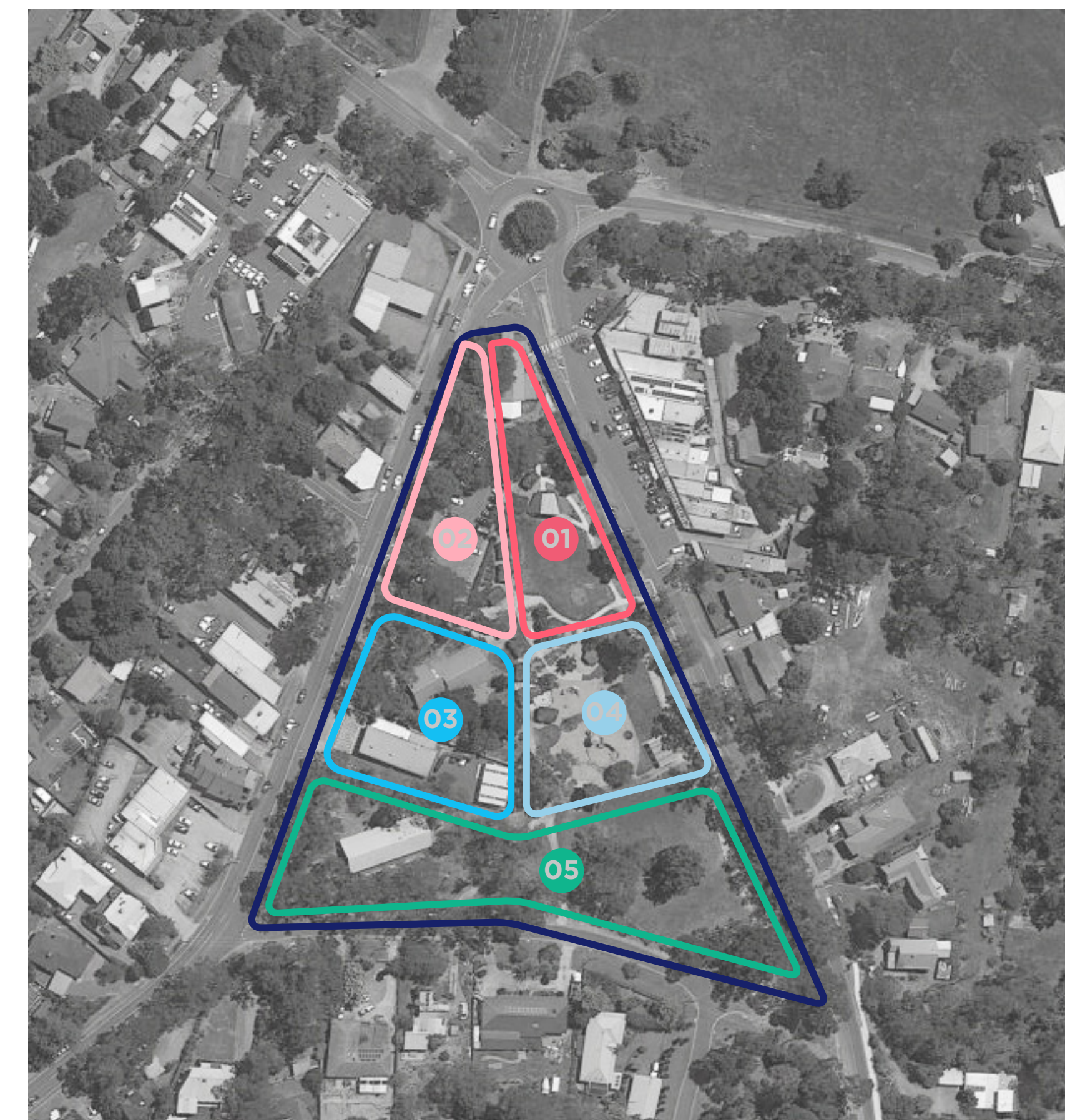
- Protect local heritage and character.
- Improve pedestrian and visual connections to and from retail strip.
- Provide increased public seating and gathering areas.

## Priorities.

→ Provide for the community's growing needs for public green open space.

- Provide safe pedestrian movements from retail strips.
- Ensure park is safe and accessible for all users.
- Provide wheelchair access to all main areas.
- Increase public seating opportunities to cater for growing communities.
- Provide for increasing population.

## Key improvements.



Possible proposed functional layout + opportunities diagram

### 01 North East Corner

- Improve pedestrian connectivity to the retail strips.
- Provide Plaza treatments with additional public seating.
- Provide traffic calming treatments on Mountain Highway.

### 02 North West Corner

- Retain the carpark to increase connectivity to the Family and Children's Centre.
- Maintain green buffer between the carpark and the reserve.

### 03 Western Side

- Strengthen pedestrian and visual link between Forest Road and Mountain Highway.
- Improve safety by removing visual barriers and places for concealment.

### 04 Eastern Side

- Rejuvenate play space.
- Create events and passive relaxation space.

### 05 Southern Edge

- Connect the Scout Hall to the play space to strengthen the children's precinct.
- Retain and protect existing trees.
- Provide formalised park boundary and pedestrian routes.
- Create nature play for all ages.



# The DRAFT Master Plan.

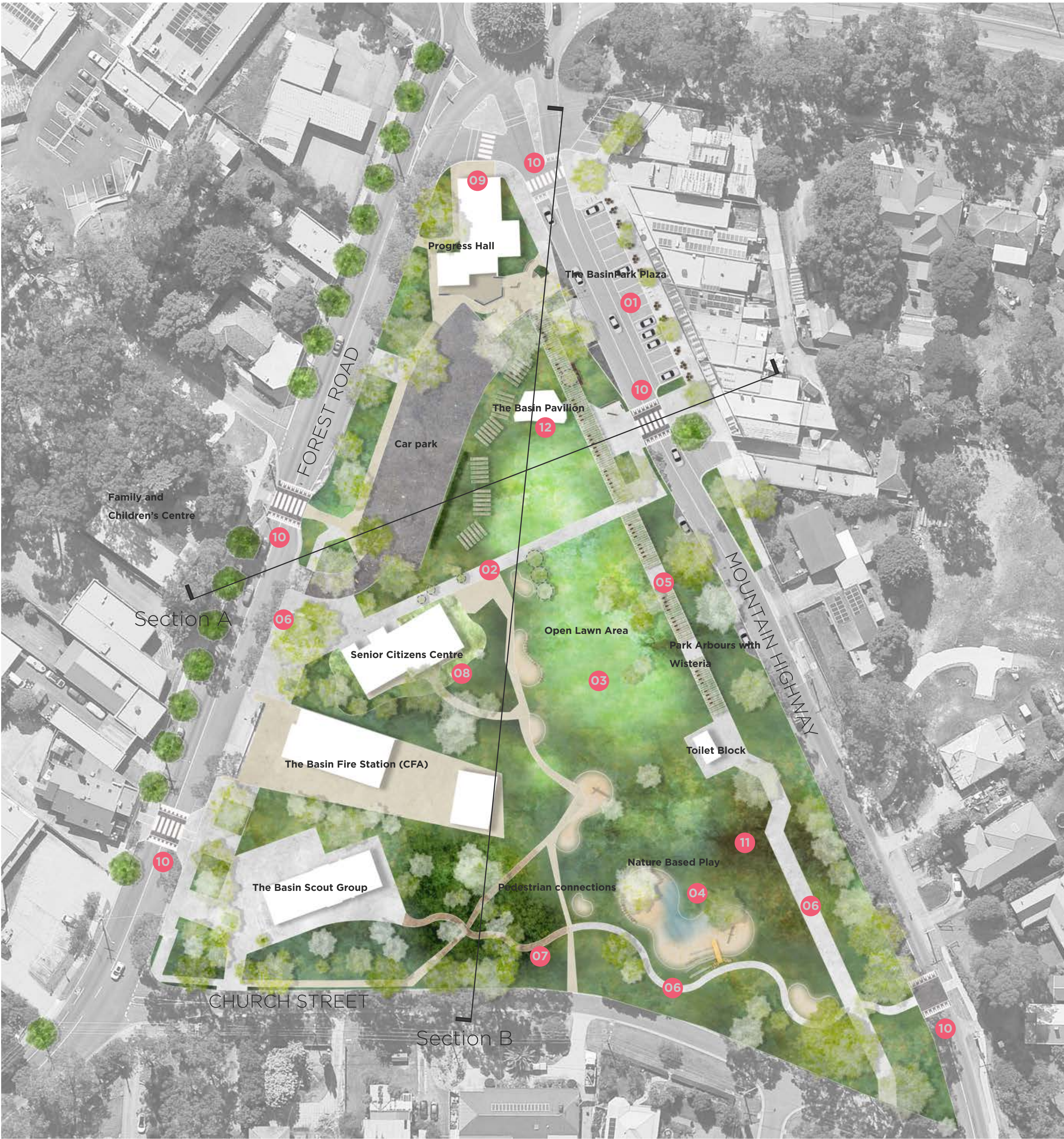
This DRAFT Master Plan proposes improvements that will expand on the parks existing positive attributes and allow current and future generations to enjoy and benefit from The Basin Triangle.

## Proposed improvements

- 01 Proposed Basin Triangle park plaza with traffic calming treatments. Widened outdoor dining areas and public covered seating. Proposed bike racks for the cycling community.
- 02 Proposed pedestrian link between Forest Road and Mountain Highway.
- 03 Widened open lawn area for play and events.
- 04 Relocated nature and mountain themed play with pedestrian links to Scout Hall.
- 05 Public seating and walkways underneath with new and re-purposed arbours with Wisteria providing a lush green canopy.
- 06 Proposed pedestrian connection around the perimeter of The Basin Triangle.
- 07 Proposed pedestrians connections using raised decking to protect the significant vegetation.
- 08 Rejuvenate the soft landscape to Senior Citizens Centre.
- 09 Upgrade the Progress Hall facade.
- 10 Proposed safe pedestrian crossing and connections.
- 11 Proposed native gardens.
- 12 Improve the functionality of the pavilion for community events with an upgrade to the existing electrical infrastructure, an acoustic treatment of the pavilion and improvements to drainage in and around the site.

## Key

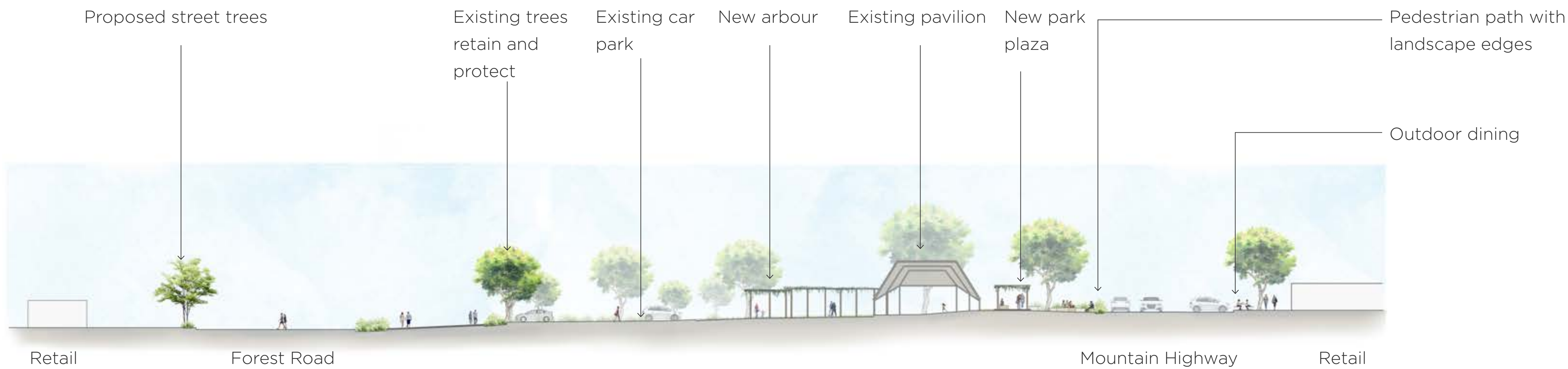
	Existing hard paving		Irrigated lawn
	Proposed hard paving		Garden bed
	Proposed raised decking		Proposed native garden
	Existing arbour		Protect and enhance significant vegetation area
	Proposed arbour		Existing trees
	Existing bench		Proposed trees
	Proposed bench		
	Nature play nodes		



Illustrative plan Scale 1:500 at A1



The DRAFT Masterplan Sections.



Section A (from Forest Road to Mountain Highway, facing north)  
Scale 1:300



Section B (from Church Street to Mountain Highway, facing west)  
Scale 1:300



## The DRAFT Masterplan.



View to the north from Mountain Highway



View to the north from south of The Basin Triangle



## The DRAFT Masterplan.



Bird's-eye view