

# ERICA AVENUE SKETCH DESIGN

Genista Avenue

TO BE CONFIRMED WITH  
GREEN SPINE CONSULTANT

Bike lane raised to same  
level as footpath and  
connects into green spine



Temporary pop-up park subject  
to future private development.



Work with PTV to expand  
bike hub and upgrade  
cycling infrastructure



Cut out selected areas of asphalt  
to create areas for additional  
trees and planting

Orchid Avenue

Expanded and improved  
pedestrian crossings and  
connections

Improved planting  
to allow greater  
visibility and ground  
treatment along  
multi-level car park



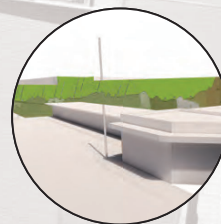
Surface color to exemplify  
existing connection to  
Boronia Junction through  
car park

Outdoor seating and dining  
provided for new and existing  
businesses

Area cleared for access to  
future car park

Bidirectional bike lanes with  
divided block edge

Upgraded Boronia  
Junction service access  
with extended fence  
and gate to buffer from  
street



Mural along East side of Erica  
Avenue represented through a  
geological section



Temporal sound and evolving live  
stream projection from the  
Dandenong Ranges to provide day  
and night activation respectively



Paving surface colored to signify  
a connection with Boronia Village

Parking reoriented to provide  
area for outdoor seating  
adjacent to future restaurant  
development



Erica Avenue demarcated by a marker  
representing the underlying geology of  
Boronia

Public open space at the entrance of Erica  
Avenue to provide a place for visitors to enjoy  
including introduction of public street piano



Boronia Junction  
Shopping Mall

Boronia Road

0m 5m 10m 20m @1:750

REALM studios