

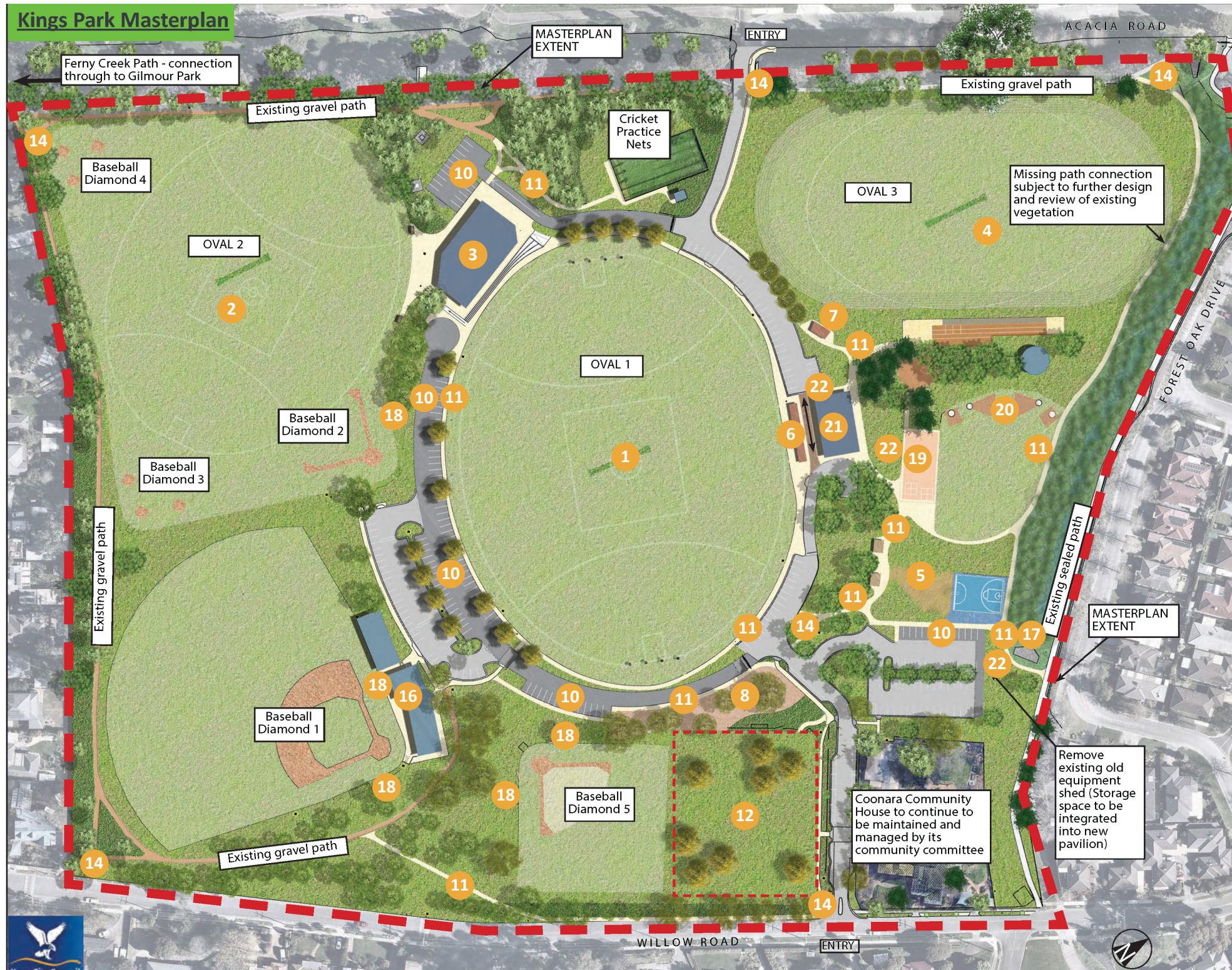
# Final Master Plan

## Kings Park, Upper Ferntree Gully

### DESIGN SUMMARY

Located in Upper Ferntree Gully at the foothills of the Dandenong Ranges, Kings Park serves as a neighbourhood open space offering a range of sporting, active, and passive recreational opportunities, as well as parkland options for the community.

The park stands as an important location for local sports and recreational activities, supporting regional baseball, junior athletics, football, and cricket within the Upper Ferntree Gully vicinity. The proposed new amenities will cater to individuals of diverse fitness levels and abilities, fostering a sense of inclusivity and community vitality.



### LEGEND

- 1 Oval 1 - New back nets and drainage upgrades.
- 2 Oval 2 - New back nets to northwest goals and drainage upgrades.
- 3 New primary shared pavilion including spectator areas and viewing terraces.
- 4 Oval 3 - Drainage upgrades.
- 5 New intergenerational play and active zone.
- 6 Oval 1 - New spectator stands with scoreboard above.
- 7 Oval 3 - New spectator hardstand with shelter over.
- 8 Mulching beneath existing significant trees.
- 9 General landscaping - garden beds and grassing in various locations.
- 10 New sealed carparks - include tree planting, WSUD and pedestrian crossings.
- 11 Path upgrade works - new concrete paths around facilities and parking - extensions to gravel walking paths.
- 12 New fenced dog park - includes drainage, fencing, furniture, tree planting and signage.
- 13 Furniture upgrade works - various locations.
- 14 New signage - wayfinding and primary entry signage.
- 15 Landscape drainage upgrade works - various locations.
- 16 Baseball clubroom upgrade works - Re-purpose a space within the existing baseball pavilion into new female change rooms. Install amenity lighting to carpark frontage.
- 17 Creek upgrade works - partial recreation of the creek.
- 18 Extend height of baseball fence (diamond 1,2 and 3) to stop flyballs.
- 19 Construction of new high jump zone.
- 20 Extend discus cages and construct cinders areas for shot-put.
- 21 New secondary pavilion for athletics - includes public toilet.
- 22 Demolition - existing pavilion, existing athletics pavilion and existing storage shed.